

## Match report



Group D

Côte d'Ivoire - Guinea 1 : 1 (0 : 1)

# 7 20 JAN 2015 17:00 Malabo / Nuevo Estadio de Malabo / EQG

Referee: Mehdi ABID CHAREF (ALG)  
Assistant referee 2: Yahaya MAHAMADOU (NIG)

Assistant referee 1: Abdelhak ETCHIALI (ALG)

## Côte d'Ivoire (CIV)

[16] Guelassiognon Sylvain GBOHOUE (GK)  
 [4] Kolo Abib TOURE  
 [8] Salomon Armand Magloire KALOU ▼  
 [9] Cheik Ismael TIOTE □  
 [10] Kouassi Gervais YAO ■  
 [12] Wilfried Guemiand BONY  
 [17] Serge Alain Stephane AURIER □  
 [19] Yaya Gnegneri TOURE (C) ▼  
 [20] Die Gnozouara Geoffroy SEREY ▼ □  
 [21] Eric Bertrand BAILLY  
 [22] Serge Wilfried KANON

## Substitutes

[1] Boubacar BARRY (GK)  
 [2] Ousmane Viera DIARRASSOUBA  
 [3] Roger Claver Djapone ASSALE  
 [5] Siaka TIENE ▲  
 [6] Cheick Kader DOUKOURE ▲  
 [7] Doumbia SEYDOU ☺ ▲  
 [11] Gadji Celi Carmel Junior TALLO  
 [13] Jean Daniel Dave Lewis AKPA AKPRO  
 [14] Tiemoko Ismael DIOMANDE  
 [15] Max Alain GRADEL  
 [18] Lacina TRAORE  
 [23] Sayouba MANDE (GK)

Coach Hervé Renard (FRA)

## Guinea (GUI)

[1] Naby YATTARA (GK)  
 [2] Mohamed YATTARA ▼ ☺  
 [3] Issiaga SYLLA  
 [4] Florentin POGBA  
 [5] Fode CAMARA  
 [8] Ibrahima TRAORE (C)  
 [10] Kevin CONSTANT  
 [12] Ibrahima CONTE  
 [15] Naby KEITA  
 [17] Boubacar FOFANA  
 [20] Baïssama Mohamed SANKOH

## Substitutes

[7] Abdoul CAMARA ▲  
 [9] Guy LANDEL  
 [11] Idrissa SYLLA  
 [13] Abdoulaye CISSE  
 [14] Lanfia CAMARA  
 [16] Abdoul KEITA (GK)  
 [18] Seydouba SOUMAH  
 [19] François KAMANO  
 [21] Mohamed DIARRA  
 [22] Aboubacar CAMARA (GK)  
 [23] Paye TAMSIR  
 [6] Kamil ZAYATTE (I)

Coach Michel Dussuyer (FRA)

## Additional time:

Second half: 3' min.

| Match events | Goal scored | Own goal | Penalty scored | Penalty missed | Yellow card | 2Y=R | Red card | Substitution   |
|--------------|-------------|----------|----------------|----------------|-------------|------|----------|--|
|              |             |          | 36'            | ☺              |             |      |          | Mohamed YATTARA [2]  |
|              |             |          | 40'            | □              |             |      |          | Serge Alain Stephane AURIER [17]                             |
|              |             |          | 54'            | □              |             |      |          | Die Gnozouara Geoffroy SEREY [20]                            |
|              |             |          | 58'            | ■              |             |      |          | Kouassi Gervais YAO [10]                                     |
|              |             |          | 62'            | □              |             |      |          | Cheik Ismael TIOTE [9]                                       |
|              |             |          | 65'            | ☺              |             |      |          | in Doumbia SEYDOU [7], out Salomon Armand Magloire KALOU [8] |
|              |             |          | 65'            | ☺              |             |      |          | in Siaka TIENE [5], out Die Gnozouara Geoffroy SEREY [20]    |
|              |             |          | 71'            | ☺              |             |      |          | in Abdoul CAMARA [7], out Mohamed YATTARA [2]                |
|              |             |          | 72'            | ☺              |             |      |          | Doumbia SEYDOU [7]   |
|              |             |          | 86'            | ☺              |             |      |          | in Cheick Kader DOUKOURE [6], out Yaya Gnegneri TOURE [19]   |

Att Attendance  
GK Goalkeeper  
(C) CaptainA Absent  
I Injured  
N Not eligible to playAET After extra time  
2Y=R Expulsion due to Second Caution  
PSO Penalty shoot-outY Single yellow card  
R Direct red card

# Match statistics

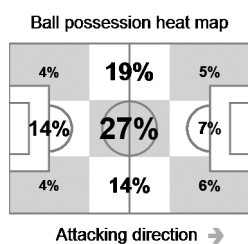


Group D

## Côte d'Ivoire - Guinea 1 : 1 ( 0 : 1 )

# 7 20 JAN 2015 17:00 Malabo / Nuevo Estadio de Malabo / EQG

### Côte d'Ivoire (CIV)

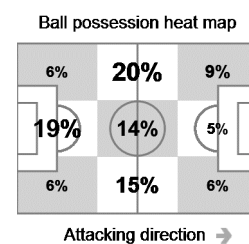


10/4  
21  
9  
0  
0  
4  
0  
3  
0  
1  
47%  
23

### Statistics

Shots/Shots on goal  
Fouls  
Corner kicks  
Direct free kicks leading to a goal  
Indirect free kicks leading to a goal  
Offsides  
Own goals  
Cautions  
Expulsion due to second caution  
Direct expulsions  
Ball possession  
Actual playing time

### Guinea (GUI)



10/4  
13  
4  
2  
0  
1  
0  
0  
0  
0  
53%  
26

ORANGE Man of the Match: 8, Ibrahima TRAORE (Guinea)

| #                  | Name        | Pos | Min | GF | GA | S/SG   | PK | Fouls<br>FC FS | Y  | 2Y=R | R |
|--------------------|-------------|-----|-----|----|----|--------|----|----------------|----|------|---|
| 16                 | GBOHOUO     | GK  | 90  |    | 1  |        |    |                |    |      |   |
| 4                  | TOURE KOLO  | DF  | 90  |    |    |        |    |                |    |      |   |
| 8                  | KALHUNO     | FW  | 65  |    |    |        | 2  |                |    |      |   |
| 9                  | TIOTE       | MF  | 90  |    |    |        | 4  | 1              | 1  |      |   |
| 10                 | GERVINHO    | FW  | 58  |    |    | 2 / 2  | 2  |                |    |      | 1 |
| 12                 | B. WILFRIED | FW  | 90  |    |    | 5 / 1  | 6  | 1              |    |      |   |
| 17                 | S. AURIER   | DF  | 90  |    |    |        | 2  | 3              | 1  |      |   |
| 19                 | TOURE YAYA  | MF  | 86  |    |    | 1 / 0  | 3  | 1              |    |      |   |
| 20                 | SEREY DIE   | MF  | 65  |    |    |        | 1  | 2              | 1  |      |   |
| 21                 | BAILLY      | DF  | 90  |    |    |        |    |                |    |      |   |
| 22                 | KANON       | DF  | 90  |    |    | 1 / 0  | 2  | 1              |    |      |   |
| <b>Substitutes</b> |             |     |     |    |    |        |    |                |    |      |   |
| 5                  | TIENE       | DF  | 25  |    |    |        |    |                |    |      |   |
| 6                  | DOUKOURE    | MF  | 4   |    |    |        |    | 1              |    |      |   |
| 7                  | DOUMBIA     | FW  | 25  | 1  |    | 1 / 1  | 1  | 1              |    |      |   |
| <b>Own goals</b>   |             |     |     |    |    |        |    |                |    |      |   |
| <b>Totals</b>      |             |     |     | 1  | 1  | 10 / 4 |    | 21             | 13 | 3    | 1 |

| #                  | Name       | Pos | Min | GF | GA | S/SG   | PK | Fouls<br>FC FS | Y  | 2Y=R | R |
|--------------------|------------|-----|-----|----|----|--------|----|----------------|----|------|---|
| 1                  | YATTARA.N  | GK  | 90  |    | 1  |        |    |                |    |      |   |
| 2                  | YATTARA JR | FW  | 71  | 1  |    | 2 / 2  |    |                |    |      |   |
| 3                  | ISSIAGA    | DF  | 90  |    |    | 1 / 0  |    | 1              |    |      |   |
| 4                  | POGBA      | DF  | 90  |    |    |        |    |                |    |      |   |
| 5                  | CAMARA     | DF  | 90  |    |    |        |    | 2              | 2  |      |   |
| 8                  | TRAORE     | MF  | 90  |    |    | 2 / 0  |    | 2              | 3  |      |   |
| 10                 | CONSTANT   | MF  | 90  |    |    | 1 / 0  |    | 2              | 2  |      |   |
| 12                 | CONTE      | MF  | 90  |    |    | 2 / 1  |    | 2              | 4  |      |   |
| 15                 | KEITA      | MF  | 90  |    |    |        |    | 1              | 1  |      |   |
| 17                 | FOFANA     | MF  | 90  |    |    | 1 / 0  |    | 2              | 7  |      |   |
| 20                 | SANKHOH    | DF  | 90  |    |    |        |    | 1              |    |      |   |
| <b>Substitutes</b> |            |     |     |    |    |        |    |                |    |      |   |
| 7                  | RAZZAGUI   | FW  | 19  |    |    | 1 / 1  |    |                |    |      |   |
| <b>Own goals</b>   |            |     |     |    |    |        |    |                |    |      |   |
| <b>Totals</b>      |            |     |     | 1  | 1  | 10 / 4 |    | 13             | 21 |      |   |

Pos Position  
GK Goalkeeper  
DF Defender  
MF Midfielder  
FW Forward  
(C) Captain  
Min Minutes played  
GF Goals for  
GA Goals against  
PK Penalty kicks ( Goals / Shots )  
2Y=R Expulsion due to Second Caution  
SG Shots on goal  
FC Fouls committed  
FS Fouls suffered  
Y Single yellow card  
R Direct red card  
S Shots

